



GMT MONTHLY MEMBERSHIP PROGRESS REPORT

Results as of: 5/31/2020

Multiple District 21

LOCATION: ARIZONA

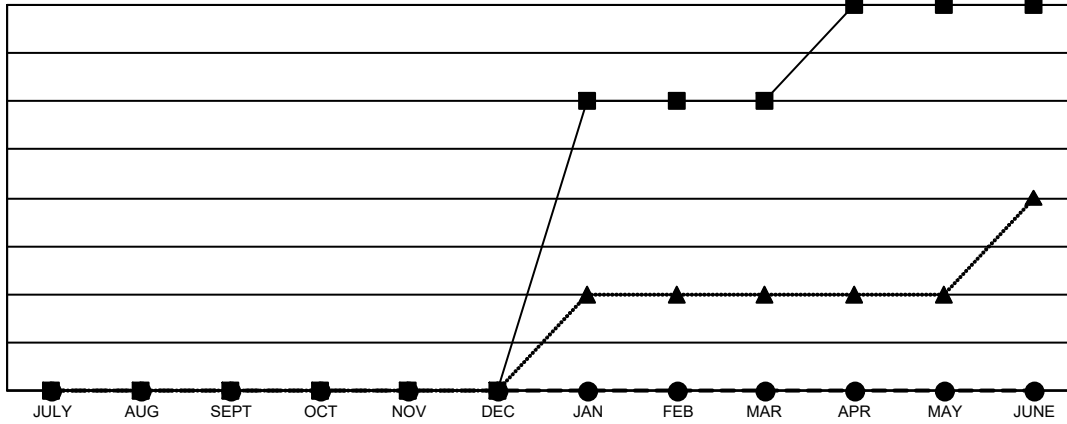
GMT: OPEN

GMT CA 1

Clubs			
RESULTS FOR 2019-2020			
QUARTER	NEW CLUB GOAL	NEW CLUBS	DROPPED CLUBS
JULY/AUG/SEPT	0	0	4
OCT/NOV/DEC	0	0	3
JAN/FEB/MAR	3	0	1
APR/MAY/JUNE	1	0	1

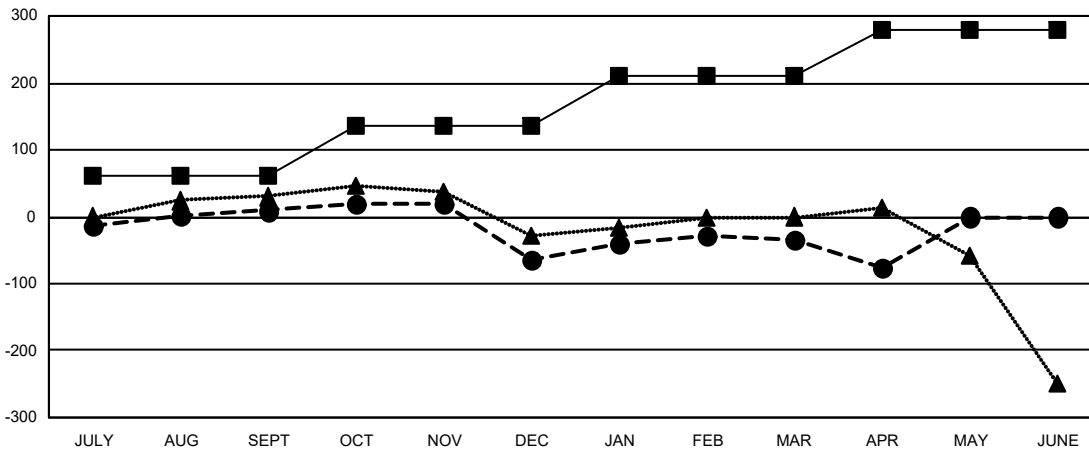
Members			
RESULTS FOR 2019-2020			
QUARTER	MEMBER GROWTH NET GOAL	MEMBER GROWTH ACTUAL	DROPPED MEMBERS ACTUAL (including transfers)
JULY/AUG/SEPT	62	111	91
OCT/NOV/DEC	75	105	159
JAN/FEB/MAR	73	102	54
APR/MAY/JUNE	70	22	44

GOALS AND ACTUAL NEW CLUBS CUMULATIVE



- - CURRENT YEAR GOALS FOR NEW CLUBS
- - CURRENT YEAR ACTUAL NEW CLUBS
- ▲ - LAST YEAR ACTUAL NEW CLUBS

GOALS AND ACTUAL MEMBERS CUMULATIVE



- - MEMBER GROWTH NET GOAL
- - MEMBER GROWTH ACTUAL
- ▲ - LAST YEAR MEMBERSHIP ACTUAL

DROPPED CLUBS: 9	
DROPPED MEMBERS	
DECEASED	34
CLUB CANCELLED	71
OTHER	243
TOTAL	348

58 CLUBS OF 113 ADDED 1 OR MORE NEW MEMBERS

[CLICK HERE FOR CUMULATIVE MEMBERSHIP DATA](#)

GENDER DISTRIBUTION	
MALE	1,573 (56.28%)
FEMALE	1,222 (43.72%)

TOTAL FAMILY UNIT MEMBERS	768
FAMILY MEMBERS PAYING HALF DUES	401